



## PRODUCT DATA SHEET

### Threaded fittings series GOLD

#### 1. Purpose and scope

Threaded brass Raftec connecting fittings are used to create detachable threaded connections on pipelines for cold, drinking, domestic and hot water supply, heating, compressed air and on technological pipelines that transport gases and liquids that are not aggressive to the materials of the connectors. The connectors can be used on pipelines made of any material: steel, copper, brass, plastic, metal polymer, polypropylene, etc. Connections are made on cylindrical pipe threads according to GOST 6357 (ISO 228, EN 10226).

#### 2. Technical specifications

№	Characteristic	Value
1	Maximum temperature of the working environment, °C	200
2	Maximum operating temperature for AS01, °C	120
3	Connecting thread	Inch pipe
4	Average full service life, years	35

Excess pressures for pressure-treated brass pipeline parts according to GOST 15527

Thread designation in inches	Nominal pressure, PN, MPa	Maximum working pressure, PN, Mpa, at medium temperature, °C	
		120°C	200°C
1/4"	4,0	4,0	3,2
3/8"	4,0	4,0	3,2
1/2"	4,0	4,0	3,2
3/4"	4,0	4,0	3,2
1"	4,0	4,0	3,2
1 1/4"	2,5	2,5	2,0
1 1/2"	2,5	2,5	2,0
2"	2,5	2,5	2,0

Thread parameters according to GOST 6357

Thread designation in inches	Outer thread	Thread pitch, mm	Number of threads per 1"
1/4"	13,158	1,337	19
3/8"	16,663	1,337	19
1/2"	20,956	1,814	14
3/4"	26,442	1,814	14
1"	33,250	2,309	11
1 1/4"	41,913	2,309	11
1 1/2"	47,805	2,309	11
2"	59,616	2,309	11

#### 3. Material

The connectors are made of brass grade CW 617N by hot volume stamping in accordance with the EN 12165 standard.

№	Element name	Material	Material grade according to standards
1	Corps	Hot-pressed brass	CW617N
2	Nut	Hot-pressed brass	CW617N
3	Removable nozzle sealing	Ethylene-propylene-diene monomer	EPDM

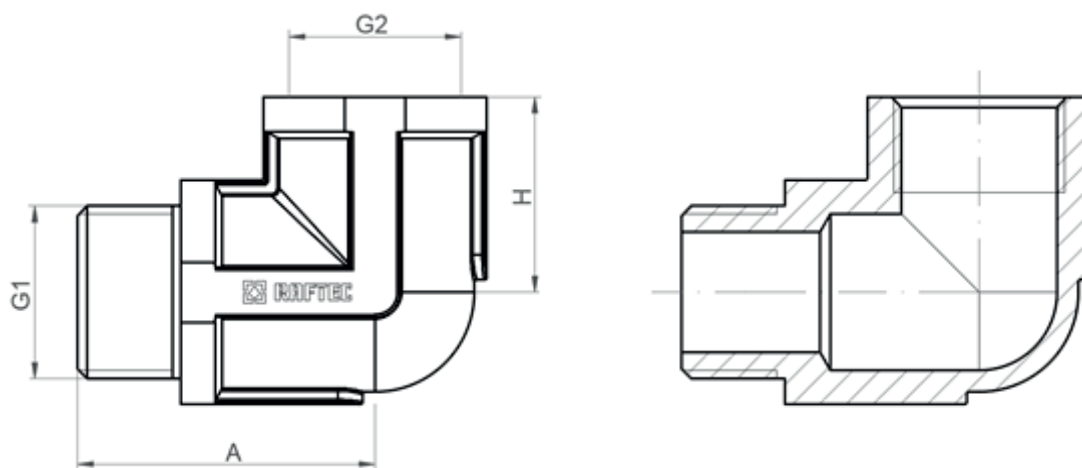
## 4. Installation instructions

1. Installation can be performed by a specialist or a specialized organization.
2. Installation of connectors should be carried out in accordance with the requirements of SP 73.13330.2012 "Internal sanitary and technical systems".
3. The fitting can be installed in any installation position.
4. The fittings should not be subjected to loads from the pipeline (bending, compression, tension, torsion, distortions, vibration, misalignment of the pipes, uneven tightening of the fasteners).
5. If necessary, supports or compensators should be provided that reduce the load on the fittings from the pipeline.
6. Misalignment of connecting pipelines should not exceed 3 mm with a length of up to 1 m plus 1 mm for each subsequent meter.
7. As a sealant for threaded connections, FUM tape (fluoroplastic sealant), polyamide thread with silicone, flax with special pastes, as well as other sealant materials that ensure the tightness of the connections should be used.
8. After installation, the system components must be tested for tightness by hydraulic or pneumatic methods. A hex wrench should be used to install chrome-plated extensions.
9. When installing fittings, it is forbidden to apply torques to them that exceed the values specified in the passport table and it is recommended to use ordinary wrenches:

Thread, inches	1/2"	3/4"	1"	1 1/4"	1 1/2"	2"
Limiting torque (thread), Nm	30	40	60	80	120	150

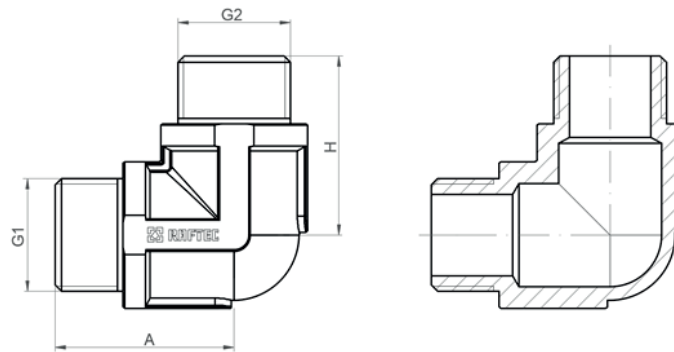
## 5. Nomenclature and overall dimensions

### 5.1 Angle internal thread-external thread



Angle 90°						
Size	Article	G	G1	A, mm.	H, mm.	Weight, gr
1/2"	GUP01	1/2"	1/2"	36	24	99
3/4"	GUP02	3/4"	3/4"	43	28	170
1"	GUP03	1"	1"	47	31	221

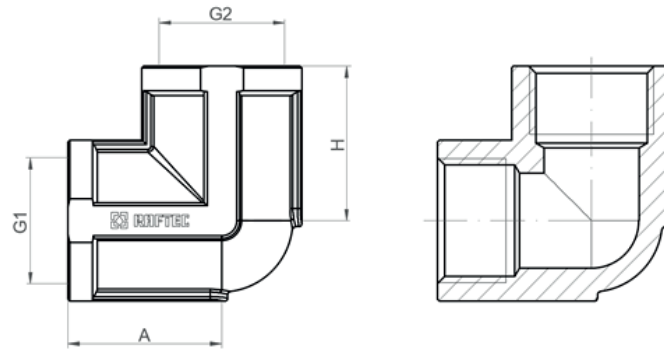
## 5.2 Angle external thread-external thread



**Angle 90°**

Size	Article	G	G1	A, mm.	H, mm.	Weight, gr
1/2"	GUN01	1/2"	1/2"	33	33	102
3/4"	GUN02	3/4"	3/4"	43	43	157
1"	GUN03	1"	1"	47	47	216

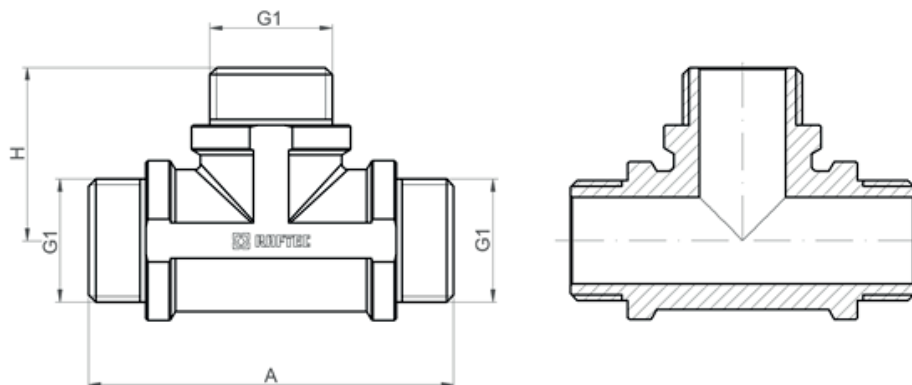
## 5.3 Angle internal thread-internal thread



**Angle 90°**

Size	Article	G	G1	A, mm.	H, mm.	Weight, gr
1/2"	GU01	1/2"	1/2"	26	26	99
3/4"	GU02	3/4"	3/4"	28	28	137
1"	GU03	1"	1"	31	31	190

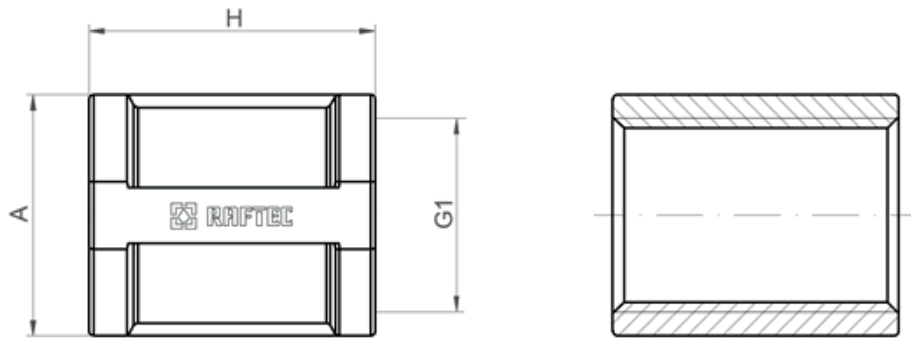
## 5.4 Tee external thread



**Tee**

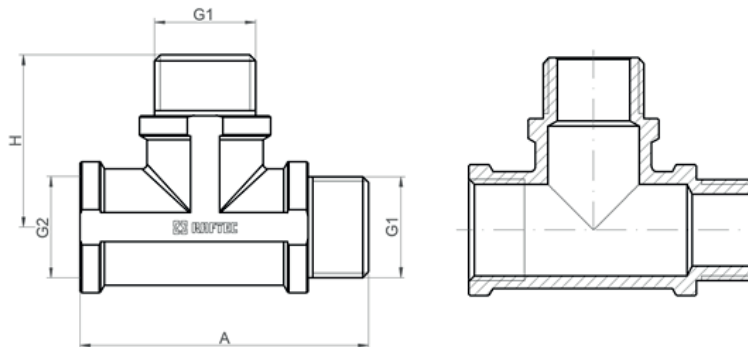
Size	Article	G	A, mm.	H, mm.	Weight, gr
1/2"	GTNNN010101	1/2"	60	30	158

## 5.5 Coupling internal thread



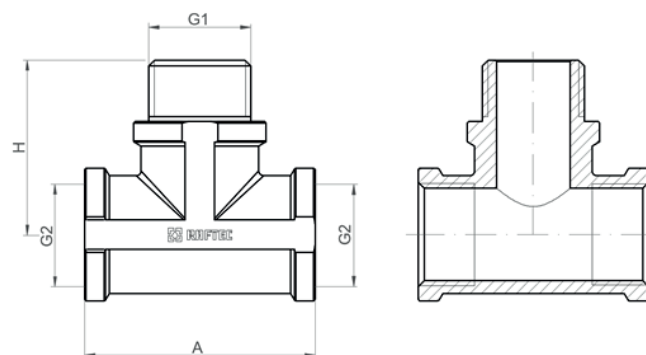
Coupling					
Size	Article	G	A, mm.	H, mm.	Weight, gr
1/2"	GMR01	1/2"	27	31	49
3/4"	GMR02	3/4"	34	31	75
1"	GMR03	1"	39	38	118

## 5.6 Tee internal thread-external thread-external thread



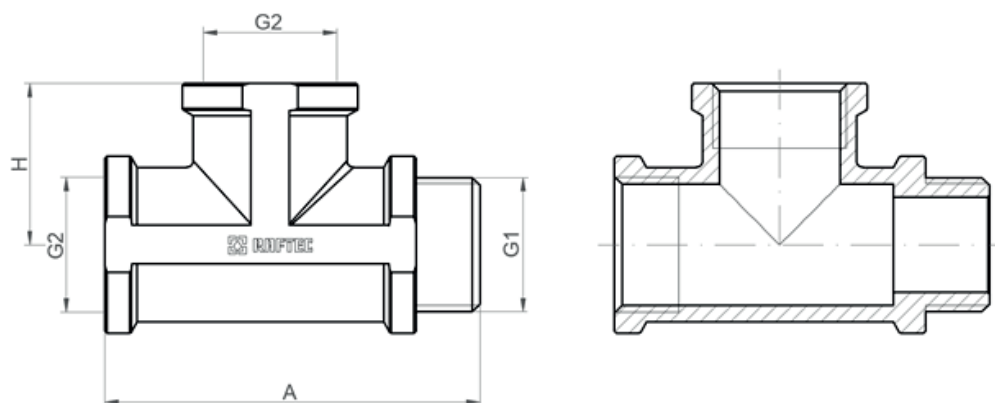
Tee						
Size	Article	G	G1	A, mm.	H, mm.	Weight, gr
1/2"	GTVNN010101	1/2"	1/2"	60	36	126

## 5.7 Tee internal thread-external thread-internal thread



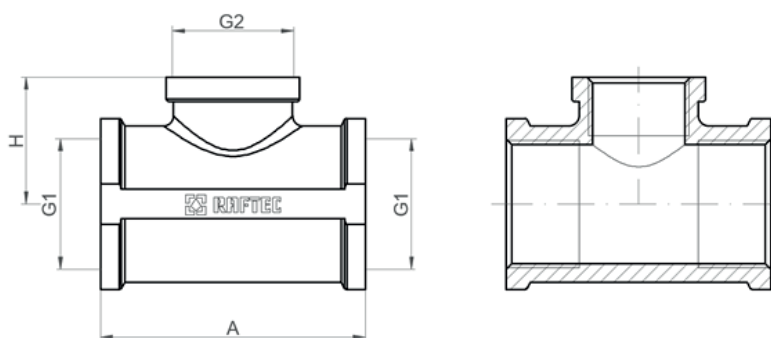
Tee						
Size	Article	G	G1	A, mm.	H, mm.	Weight, gr
1/2"	GTVNV010101	1/2"	1/2"	47	36	120

### 5.8 Tee internal thread-internal thread-external thread



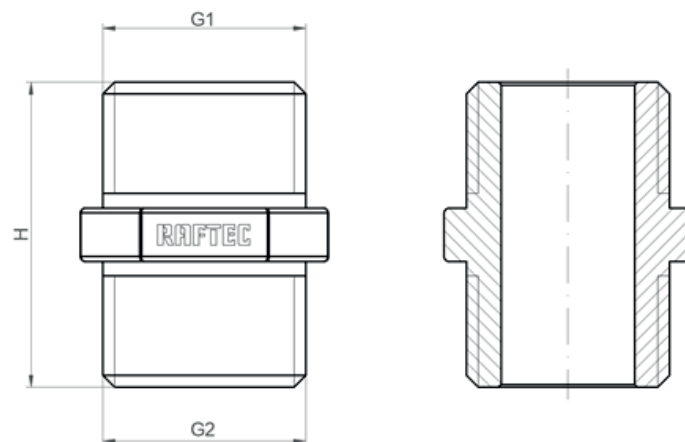
Tee						
Size	Article	G	G1	A, mm.	H, mm.	Weight, gr
1/2"	GTVVN010101	1/2"	1/2"	58.5	25	115

### 5.9 Tee female thread-female thread-female thread



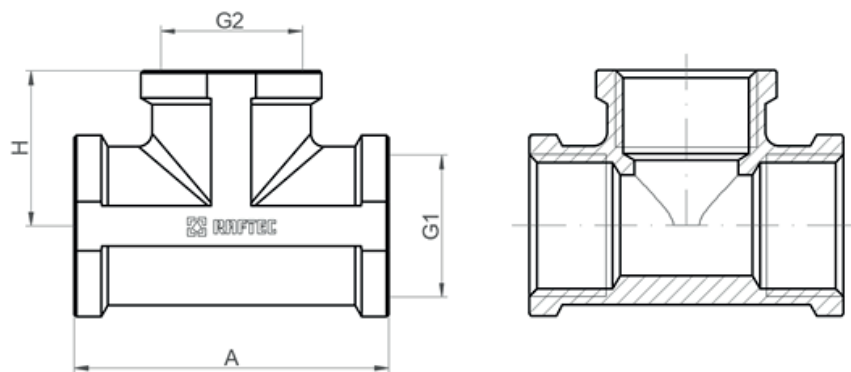
Tee						
Size	Article	G	G1	A, mm.	B, mm.	Weight, gr
3/4"x1/2"x3/4"	GTVVV020102	3/4"	1/2"	55	26	169
1"x1/2"x1"	GTVVV030103	1"	1/2"	70	30	242
1"x3/4"x1"	GTVVV030203	1"	3/4"	70	35	254

### 5.10 Nipple external thread-external thread



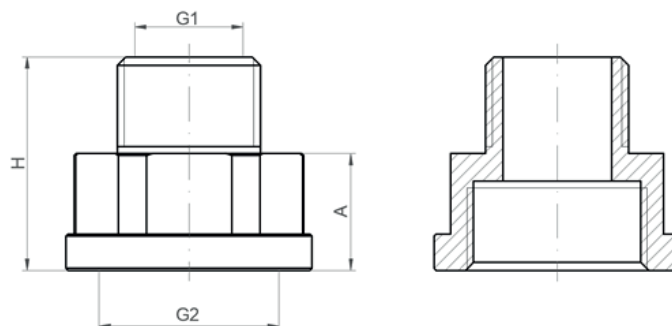
Nipple					
Size	Article	G	G1	H, mm.	Weight, gr
1/2"	GN01	1/2"	1/2"	32	48
3/4"	GN02	3/4"	3/4"	36	84
1"	GN03	1"	1"	38	111

### 5.11 Tee internal thread



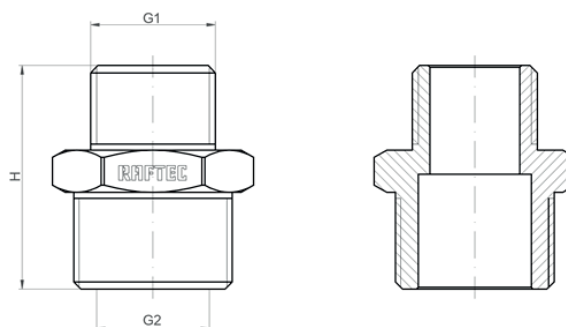
Tee						
Size	Article	G	G1	A, mm.	H, mm.	Weight, gr
1/2"x1/2"x1/2"	GT01	1/2"	1/2"	47	24	103
3/4"x3/4"x3/4"	GT02	3/4"	3/4"	54	28	161
1"x1"x1"	GT03	1"	1"	70	35	268

### 5.12 Adapter internal thread-external thread



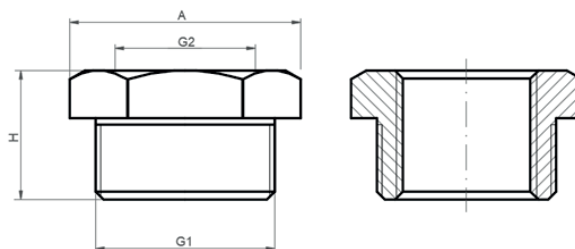
Adapter						
Size	Article	G	G1	A, mm.	H, mm.	Weight, gr
1/2"x1/4"	GP01001	1/4"	1/2"	14	24	31
1/2"x3/8"	GP01005	3/8"	1/2"	13	23	29
3/4"x1/2"	GP0201	1/2"	3/4"	17	31	75
1"x1/2"	GP0301	1"	1/2"	16	27	85
1"x3/4"	GP0302	3/4"	1"	18	33	100
1 1/4"x1"	GP0403	1"	1 1/4"	20	36	159

### 5.13 Reducing nipple, male thread-male thread



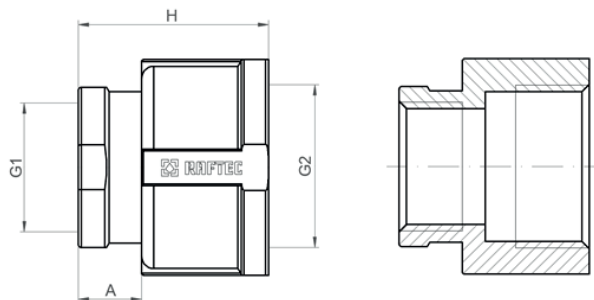
Nipple adapter					
Size	Article	G	G1	H, mm.	Weight, gr
1/2"x1/4"	GNP01001	1/4"	1/2"	27	40
1/2"x3/8"	GNP01005	3/8"	1/2"	28	45
3/4"x1/2"	GNP0201	1/2"	3/4"	37	74
1"x1/2"	GNP0301	1/2"	1"	33	99
1"x3/4"	GNP0302	3/4"	1"	38	107
1 1/4"x1"	GNP0403	1"	1 1/4"	40	167

### 5.14 Futorka internal thread-external thread



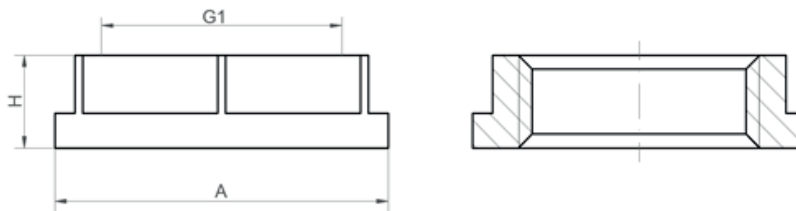
Futorka						
Size	Article	G	G1	A, mm.	H, mm.	Weight, gr
1/2"x3/8"	GF01005	3/8"	1/2"	26	20	32
1/2"x1/4"	GF01001	1/4"	1/2"	26	22	28
3/4"x1/2"	GF0201	1/2"	3/4"	34	19	43
1"x1/2"	GF0301	1/2"	1"	39	25	95
1"x3/4"	GF0302	3/4"	1"	41	25	79
1 1/4"x1"	GF0403	1"	1 1/4"	50	25	124

### 5.15 Reducing coupling, female thread-female thread



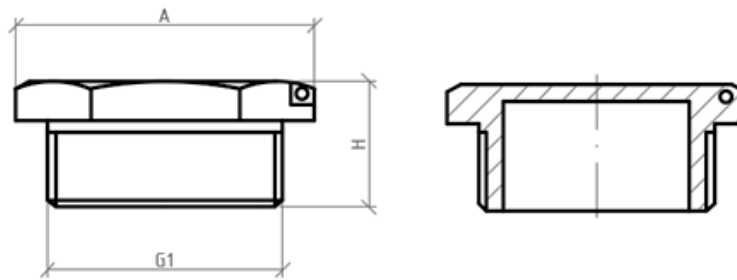
Adapter coupling						
Size	Article	G	G1	A, mm.	H, mm.	Weight, gr
3/4"x1/2"	GMP0201	1/2"	3/4"	11	31	96
1"x1/2"	GMP0301	1/2"	1"	14	34	146
1"x3/4"	GMP0302	3/4"	1"	10	31	129

### 5.16 Locknut internal thread



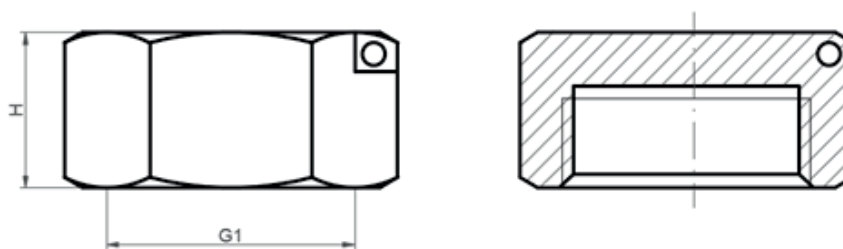
Locknut					
Size	Article	G	A, mm.	H, mm.	Weight, gr
1/2"	GK01	1/2"	29	8	19
3/4"	GK02	3/4"	39	11	50

### 5.17 Plug external thread



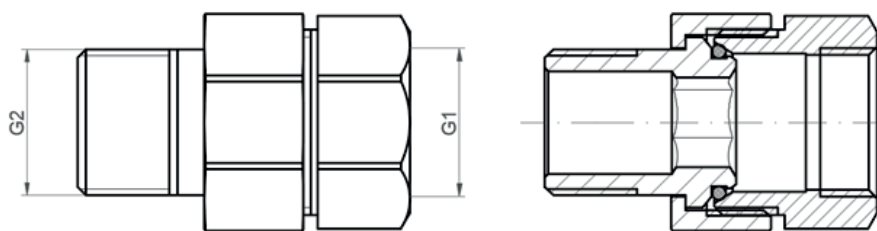
Plug				
Size	Article	G	H, mm.	Weight, gr
1/2"	GZN01	1/2"	17	33
3/4"	GZN02	3/4"	19	49
1"	GZN03	1"	21	81

### 5.18 Plug internal thread



Plug				
Size	Article	G	H, mm.	Weight, gr
1/2"	GZV01	1/2"	13	33
3/4"	GZV02	3/4"	14	38
1"	GZV03	1"	15	66

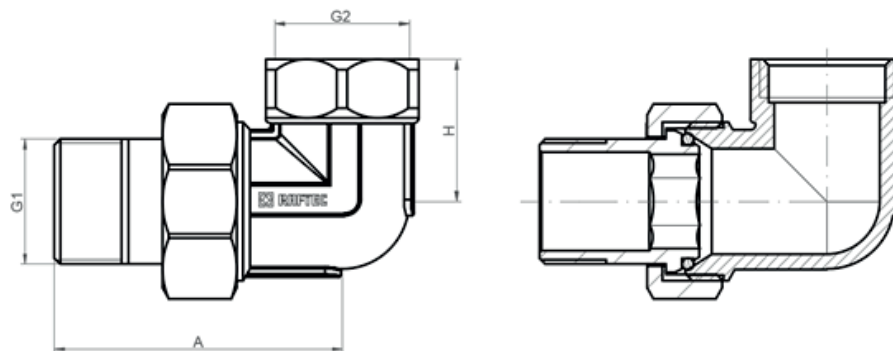
### 5.19 American straight-laced



American straight-laced				
Size	Article	G	G1	Weight, gr
1/2"	GAS01	1/2"	1/2"	117
3/4"	GAS02	3/4"	3/4"	180
1"	GAS03	1"	1"	283



## 5.20 American-angle bend



American-angle bend					
Size	Article	G	G1	H, mm	Weight, gr
1/2"	GAS01-U	1/2"	1/2"	24	165
3/4"	GAS02-U	3/4"	3/4"	30	252
1"	GAS03-U	1"	1"	34	358

## 6. Operating and maintenance instructions

1. Fittings must be operated under the conditions specified in the tables specified in section No. 2 "Technical specifications".
2. The fitting must be installed in accordance with the instructions in section 4, "Installation instructions".

## 7. Storage and transportation

1. Products must be stored in the packaging of the manufacturer under storage conditions 3 according to GOST 15150-69.
2. Transportation of the product must be carried out in accordance with requirements 5 of GOST 15150-69.

## 8. Utilization

Disposal of the product (melting, burial, resale) in accordance with the procedure established by the Law of Ukraine of 1992 No. 50, Art. 678, (as amended by No. 2556 - III (2556-14) of 21.06.2001, No. 48, Art. 252 "On Atmospheric Air Protection" (as amended by 14.07.2016), of 1998 No. 36-37, 242 "On Waste" (as amended by 09.04.2015), of 1991 No. 41, Art. 546 "On Environmental Protection" (as amended by 04.10.2016), as well as other norms, acts, rules, orders, etc.

## 9. Warranty obligations

1. The manufacturer guarantees that the products comply with safety requirements, provided that the consumer complies with the rules of use, transportation, storage, installation and operation.
2. The warranty covers all defects caused by the manufacturer's fault.
3. The warranty does not cover defects that occur in the following cases:
  - violation of passport regimes for transportation, storage, installation, operation and maintenance of the product;
  - improper transportation and loading and unloading operations;
  - the presence of traces of exposure to substances that are aggressive to the product materials;
  - the presence of damage caused by fire, natural disasters, force majeure circumstances;
  - the presence of damage caused by incorrect actions of the consumer;
  - the presence of traces of third-party interference in the design of the product.
4. The manufacturer reserves the right to make changes to the product design that do not affect the declared technical characteristics.

## 10. Warranty terms and conditions

1. Claims regarding the quality of the product may be made during the warranty period.
2. Defective products during the warranty period are repaired or exchanged for new ones free of charge. The decision to replace or repair the product is made by the service center. The replaced product or its part obtained as a result of the repair becomes the property of the service center.
3. The costs associated with dismantling, installation and transportation of a defective product during the warranty period are not reimbursed to the Buyer.
4. In cases where the claim is unfounded, the costs of diagnostics and examination are paid by the Buyer.
5. Products are accepted for warranty repairs (as well as for returns) fully assembled.

### WARRANTY CARD № \_\_\_\_\_

Product name \_\_\_\_\_  
Brand, article, size \_\_\_\_\_  
Number \_\_\_\_\_  
Name and address of the trading organization \_\_\_\_\_  
Sale date \_\_\_\_\_ Seller's signature \_\_\_\_\_

Stamp or seal of the  
trading organization

AGREE to the terms and conditions:

BUYER \_\_\_\_\_  
(signature)

The warranty period is seven years (eighty-four months) from the date of sale to the end consumer.

When making claims regarding the quality of the goods, the buyer shall provide the following documents:

1. An application in any form, indicating:
  - name of the organization, full name of the buyer, actual address and contact phone number;
  - name and address of the organization that performed the installation;
  - main system parameters;
  - a brief description of the defect;
2. Document proving the purchase of the product;
3. Hydraulic test certificate of the system in which the product was installed;
4. A completed warranty card is issued on the manufacturer's website "raftec.eu".

Return or exchange mark: \_\_\_\_\_

Date \_\_\_\_\_ y. Signature: \_\_\_\_\_